

Manual IFC 128E

Foreword

This manual is an installation and function description for the IFC 128E expansion card.

The expansion card is connected to the terminals in the E-series. E700 and E710 with system program version 1.20 or higher and E300 with system program version 1.00 or higher. For programming, use the PC software MAC Programmer+/SW-MTA-WIN with program version 2.20 or higher.

Besides this manual, the following manuals are also available.

E terminals, Installation

E terminals, Manual

© Beijer Electronics AB 2000

All examples in this manual are used solely to promote understanding of how the equipment works and its operation. Beijer Electronics AB take no responsibility if these examples are used in real applications.

Because of the great many application areas for this equipment, the user himself must acquire the appropriate knowledge needed to use the equipment correctly for particular applications.

Beijer Electronics AB absolves itself of all responsibilities for damage and injuries that may occur during installation or use of this equipment.

Beijer Electronics AB absolves itself of all responsibilities for any type of modification made to the equipment.

Beijer Electronics AB absolves itself of all responsibilities for damage caused to its products by other brands of equipment linked to them.

Content

1 Introduction	1
2 Installation	3
3 General	5
3.1 Configure the terminal.....	5
4 Drawings	7

Safety precautions

General

- Check the delivery for transport damage. If damage is found, advise your supplier.
- The product fulfils the requirements of article 4 of EMC directive 89/336/EEC.
- Do not use the product in an explosive environment.
- Modifications, changes and additions to the product are forbidden.
- Use only spare parts approved by Beijer Electronics AB.
- Read the user instructions carefully before use.
- This equipment should only be operated by qualified personnel.

At installation

- The product is constructed for stationary installation.
- Install the product according to the accompanying installation instructions.
- The product must be grounded according to the accompanying installation instructions.
- This equipment must be installed by qualified personnel.
- High voltage-, signal- and supply cables must be separated.
- The product should not be mounted in direct sunlight.

In use

- Keep the equipment clean.
- Emergency stop- and other safety functions should not be controlled from the terminal.
- Do not touch the keys, displays, etc. with sharp objects.

Service and maintenance

- The agreed guarantee applies.
- Clean the display and face with a soft cloth and mild detergent.
- Repairs should be made by qualified personnel.

At disassembly and scrapping

- Local regulations apply concerning recycling of products or part.
- Please note that the electrolyte condenser and display contain hazardous substances.

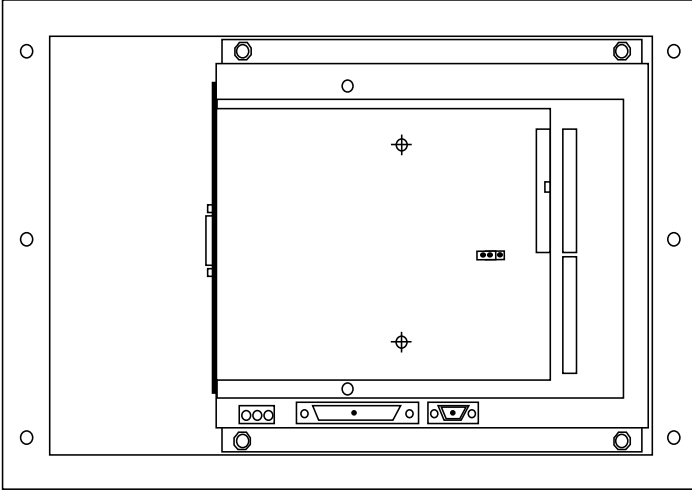
1 Introduction

The expansion card IFC 128E is used to connect external function keys or switches to the terminal. The number of function keys can be extended with up to 128 keys. If more than eight external function keys or switches are used the user must build up a diode matrix according to the chapter *Drawings*.

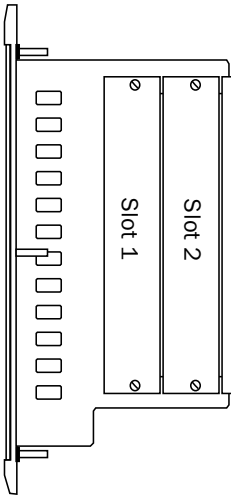
2 Installation

This chapter describes how the IFC 128E card is mounted in the terminal. Carry out the following procedures.

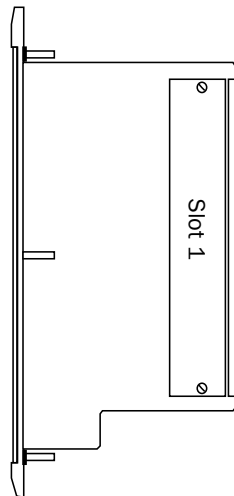
1. Switch off the terminal power (24 V).
2. Make sure that your ESD protection is good.
3. Remove the cover plate on the rear of the terminal, and the expansion plate on the short side.
4. Mount the expansion cable between X1 on the CPU card and X1 on the expansion card.
5. Place the expansion card inside the terminal with the components upwards. Fasten the card with the spacers or the screws. Use the spacers if the expansion card is mounted in slot 1, and the screws if the card is mounted in slot 2. See the figure on the next page.
6. Check that the expansion cable is correctly mounted.
7. Put the jumper J1 in the position 1-2 (slot 1) if the expansion card is mounted in slot 1, and in position 2-3 (slot 2) if the card is mounted in slot 2.
8. Mount the cover plates.
9. The unit is now ready to use.



The rear of the E300/E600/E700/E710/E900/E910



The side of the E700/E710/E900/E910



The side of the E300/E600

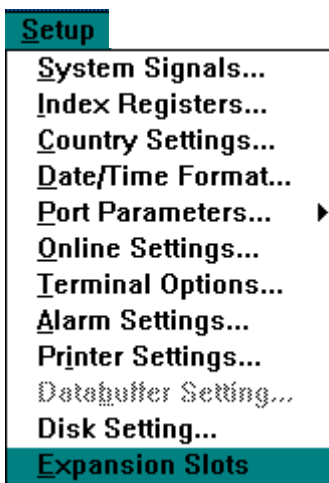
3 General

Carry out the following procedure when using IFC 128E communication.

1. Install the IFC 128E card in the terminal.
2. Connect the external function keys/switches.
3. Configure the expansion card via MAC Programmer+.
4. Now the system is ready to run.

3.1 Configure the terminal

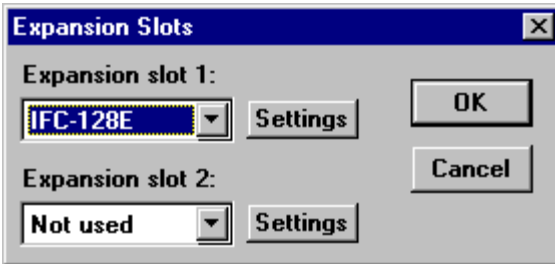
The configuration is achieved with MAC Programmer+. Select **Expansion slots** in the **Setup** menu.



Or with MAC Programmer+ version 4.00 or higher: Select **Peripherals** in the **Setup** menu and right click on **Expansion slots**.

Expansion slot 1-2:

Select the expansion slot where the card is mounted. This setting must match the jumper on the IFC 128E card. Then select **Settings**.



Settings

Parameter settings for connected external function keys or switches.



Start IO

State the start address (memory cell) for the external function keys/ switches.

Number of keys

State the number of external function keys/switches.

4 Drawings

